

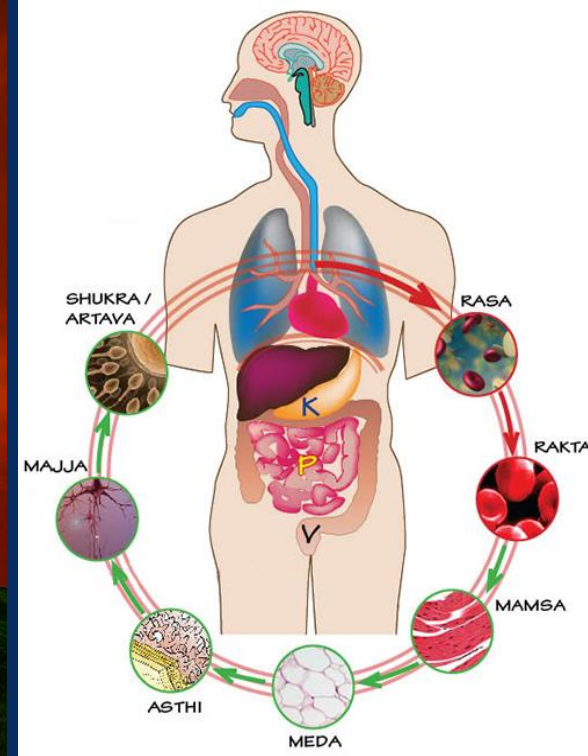
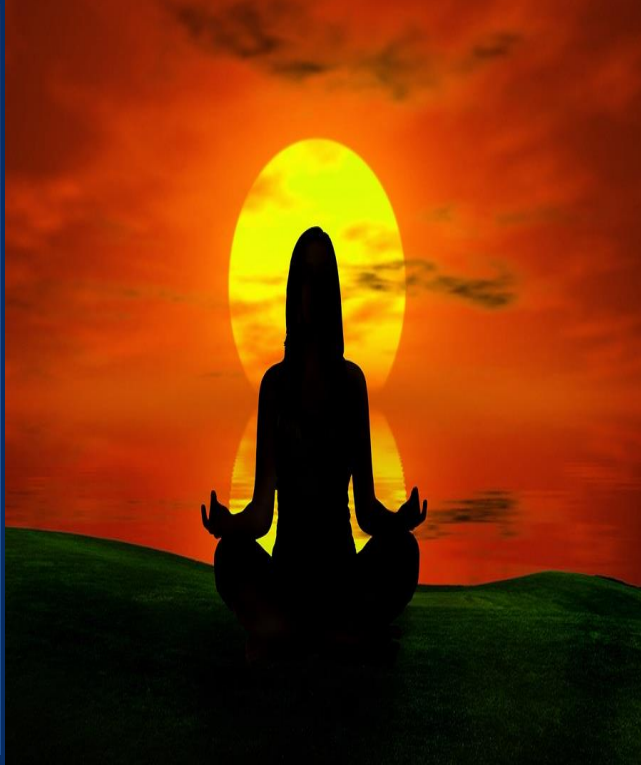
# *SROTAS* *AND* *ITS MOOLA*



PRESENTED BY  
Fatemeh Moazzami Peiro  
UG FIRST YEAR

समदोषः समाग्निश्च समधातुमलक्रियः।  
प्रसन्नात्मेन्द्रियमनाः स्वस्थ इत्यभिधीयते॥

सु सू 15/47



# Characteristics of srotas

- ❖ *Ayurveda* has considered *Srotas* are inner transport system of the body (*Samudaya*) which provides platform for activities of other important Bio-factors like:
- ❖ 3 *Doshas*, 7 *Dhatu*, *Oja*, *Agni*, thought, emotions, etc
- ❖ *Avarodaha* or Obstruction in the *Srotas* has been considered as the cause of disease

# ETYMOLOGY

Arise from the *Sanskrit Dhatu* “सु स्रवणे”

which means the secrete, to exudate, to ooze, to filter and to permeate.

## ORIGIN OF STROTAS

मूलात् खादन्तरं देहे प्रसृतं त्वभिवाहि यत् ।  
स्रोतस्तदिति विज्ञेयं सिरधमनिवर्जितम् ॥ (सु. शा.9/13)

One that arises from hollow organs like *hridaya* , carries or transports *rasadi dhatu* and is different from *sira* and *dhamani* is *srota*.

# DEFINITION

स्रवणात् स्रोतांसि ।

च.सु.30/12

The structure through which *sravanam* takes place

स्रवणादिति रसादेरेव पोष्यस्य स्रवणात् । (चक्रपाणि)

स्रोतांसि खलु परिणाममापद्यमानानां धातूनामभिवाहीनिभवन्त्ययनार्थेन  
॥च वि 2/3॥

The channels of circulation, carrying the *Dhatu* undergoing transformation to their destination are *Srotas*.

# Characteristics of srotas

- ❖ **Colour :-** Colour of *Srotas* is similar to that *Dhatu* they carry
- ❖ **Size :-** *Sookshma* (atomic), *Sthoola* (Gross)
- ❖ **Shape :-** *Vritta* (cylindrical), *Dirgha* (long), *Pratana* (reticulated)



# SYNONYMS

ACCORDING TO च.वि. 5/9

- ❖ स्रोतांसि :- opening, passage or channel.
- ❖ सिरा :- veins
- ❖ धमन्य :- arteries
- ❖ रसायन्य :- nutrient vessels and lymphatic
- ❖ रसवाहिन्य :- nutrient vessels and lymphatic or capillaries
- ❖ नाड्य :- vessels, cords, meatus, canal, tube, nerve
- ❖ पन्थान :- channels



# SYNONYMS

- ❖ मार्ग :- tracts, path, passage
- ❖ शरीरच्छिद्राणि :- opening,
- ❖ संवृतासंवृतानि :- external and internal openings
- ❖ स्थानानि :- site, hollow organs like basti
- ❖ आशयाः :- space or site
- ❖ निकेत :- spaces
- ❖ शरीरधात्ववकाश :- visible and invisible spaces

# Classification according to *Acharya Sushruta*

1. बहिर्मुखस्रोतस् :- 9 External channels

2ears, 2eyes, 2nostrils, 1oral cavity, 1 anus, 1urethra-  
2Stana vaha(breast) 1 Arthava vaha Srota(vagina)

2. अन्तर्मुखस्रोतस् :- Internal channels

# NUMBER OF SROTAS

*Acharya Charak* : 13

*Acharya Susruta* : 11 PAIRS

1 PRANA, 7 DHATU, 3 MALA,  
1 AMBHO(UDAKA), 1 ANNA

*Acharya Charak* has mentioned one more srotas,  
*Artavavaha srotas*.



# MULAM OF SROTAS

❖ *Chakrapani* has described *Mulam* as

“मुलमिति प्रभाव स्थानं”

❖ *Mula* of *Srotas* is the anatomical seat of the respective *Srotas*, the main seat of the pathology of that channel, the principle seat of manifestation of diseases

क्रम	स्रोतस	चरकानुसार	सुश्रुतानुसार
1	प्राणवह स्रोतस	हृदय, महास्रोतस	हृदय,प्राणवाहि धमनिया
2	उदकवह स्रोतस	तालु, क्लोम	तालु, क्लोम
3	अन्नवह स्रोतस	आमाशय, वाम पार्श्व	आमाशय, अन्नवाहिनी धमनिया
4	रसवह स्रोतस	हृदय, दश धमन्य	हृदय, रसवाहि धमनिया
5	रक्तवह स्रोतस	यकृत्, प्लीहा	यकृत्, प्लीहा, रक्तवाहिनी धमनि
6	मांसवह स्रोतस	स्नायु,त्वक्	स्नायु,त्वक्, रक्तवाहिनी धमनि
7	मेदोवह स्रोतस	वृक्क, वपावहन	कटि, वृक्क
8	अस्थिवह स्रोतस	मेद, जघन	-----
9	मज्जावह स्रोतस	अस्थि,सन्धि	----
10	शुक्रवह स्रोतस	वृषण, शेफ़्	स्तन, वृषण
11	मूत्रवह स्रोतस	बस्ति,वंक्षण	बस्ति,मेढ्र
12	स्वेदवह स्रोतस	मेद, लोमकूप	----
13	पुरिषवह स्रोतस	पक्काशाय, स्थूलगुद	पक्काशाय, गुद
14	आर्तववह स्रोतस	गर्भाशय, आर्तववाहिनी धमन्य	गर्भाशय, आर्तववाहिनी धमन्य





THANK  
YOU